



## A rare case of obstructive supracardiac TAPVR (Total Anomalous Pulmonary Venous Return) with aberrant right subclavian artery.

1. FCPS (Pediatric Medicine)  
Fellow Pediatric Cardiology  
NICVD, Karachi.
2. FCPS (Pediatric Medicine)  
Consultant Pediatric Medicine  
Govt. Shahbaz Sharif DHQ Hospital,  
Multan.
3. FCPS (Pediatric Medicine)  
Assistant Professor Pediatrics  
Ghurki Trust Teaching Hospital,  
Lahore.
4. FCPS (Pediatric Medicine)  
Assistant Professor Pediatric  
Medicine  
Chandka Medical College,  
Shaheed Mohtarma Benazir Bhutto  
Medical University, Larkana.
5. MBBS  
Clinical Fellow Pediatric Cardiology  
NICVD, Karachi.
6. FCPS (Pediatric Medicine)  
Fellow Pediatric Cardiology  
NICVD, Karachi.

### Correspondence Address:

Dr. Fazal ur Rehman  
Fellow Pediatric Cardiology  
NICVD, Karachi.  
fazal171@gmail.com

### Article received on:

12/02/2021

### Accepted for publication:

08/04/2021

**Fazal ur Rehman<sup>1</sup>, Sabiha Khan<sup>2</sup>, Waqas Ali<sup>3</sup>, Asif Ali Khuhro<sup>4</sup>, Basharat Hussain<sup>5</sup>, Shakeel Ahmed<sup>6</sup>**

**ABSTRACT...** Congenital aortic arch malformations manifest a broad-spectrum of differences and abnormalities that come from disturbed embryogenesis of branchial arches. Current case was a 10 months old baby girl with length of 69 cm (less than  $-3$  SD) and weight of 5.5 kg (less than  $-3$  SD). The patient had history of recurrent lower respiratory tract infections since the time of birth and failure to gain adequate weight since the time of birth. The patient has been having multiple check-ups with registered medical practitioners in the nearby locality and multiple courses of antibiotics with only partial resolution of symptoms. The 2-D echocardiogram showed her to be a case of supracardiac type of "Total Anomalous Pulmonary Venous Return (TAPVR)". All pulmonary veins making a confluence and draining into the right atrium. Significant turbulence observed at the level of superior vena cava to right atrium junction. A level of obstruction was recorded at the junction of the confluence of pulmonary veins and the vertical vein. There was aberrant right subclavian artery from the aortic arch as its third branch with no obstruction or aneurysm formation, having retrotracheal and esophageal course.

**Key words:** Echocardiogram, Right Atrium, Supracardiac, Superior Vena Cava.

**Article Citation:** Fazal ur Rehman, Khan S, Ali W, Khuhro AA, Hussain B, Ahmed S. A rare case of obstructive supracardiac TAPVR (Total Anomalous Pulmonary Venous Return) with aberrant right subclavian artery. Professional Med J 2021; 28(7):1058-1060. <https://doi.org/10.29309/TPMJ/2021.28.07.6419>

## INTRODUCTION

Congenital aortic arch malformations manifest a broad-spectrum of differences and abnormalities that come from disturbed embryogenesis of branchial arches.<sup>1</sup> These cases may present with or without any symptoms depending upon the usage and timing of imaging and diagnostic tools. These abnormalities may present as isolated entity or could be linked with different other types of intracardiac or chromosomal anomalies.<sup>2,3</sup> Imaging is considered to be a precious tools for the identifications of these abnormalities and help assisting accurate pre-surgery decisions.<sup>4,5</sup>

"Total anomalous pulmonary venous return (TAPVR)" is also termed as "total anomalous pulmonary venous connection (TAPVC)". In TAPVR, all 4 pulmonary veins are unable to form usual link to the left atrium resulting into drainage of all pulmonary venous return in the systemic venous circulation.<sup>6</sup> The incidence of TAPVR is between 0.6-1.2/10000 live births.<sup>6</sup> In newborns

having congenital heart defects, TAPVR occurs in 0.7-1.5% of cases.<sup>7,8</sup> Echocardiographic confirms the diagnosis usually whereas MRI and fast CT also assist in describing pulmonary venous drainage.<sup>9,10</sup>

## Case Presentation

Current case was a 10 months old baby girl with length of 69 cm (less than  $-3$  SD) and weight of 5.5 kg (less than  $-3$  SD), resident of Karachi, who presented to the out patients department of the National Institute of Cardiovascular Diseases (NICVD). The patient had history of recurrent lower respiratory tract infections since the time of birth and failure to gain adequate weight since the time of birth. The patient has been having multiple check-ups with registered medical practitioners in the nearby locality and multiple courses of antibiotics with only partial resolution of symptoms. The initial work up in the form of chest x-ray (CXR) and electrocardiogram (ECG) categorized the patient into the ones with increased pulmonary

blood flow and pulmonary arterial hypertension. As this warranted further investigation with a transthoracic echocardiography, the patient was advised a departmental echocardiogram.

The 2D echocardiogram done in the pediatric cardiology department of NICVD showed her to be a case of supracardiac type of TAPVR. All pulmonary veins made a confluence and draining into the right atrium. The path of the anomalous channel was: confluence of pulmonary veins to the vertical vein to the innominate vein to the superior vena cava. It is important to mention the significant turbulence observed at the level of superior vena cava to right atrium junction. A level of obstruction was recorded at the junction of the confluence of pulmonary veins and the vertical vein. Figure-1 and 2 are showing 2D images of trans thoracic echocardiography.



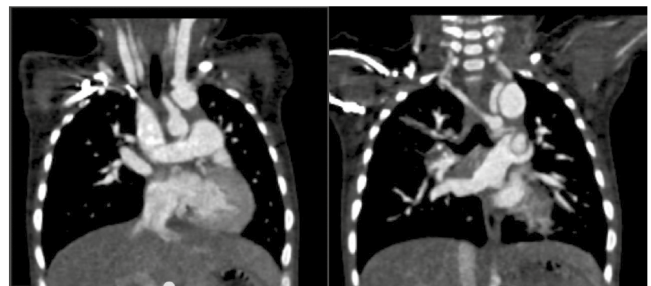
**Figure-1. Transthoracic echocardiography showing path of anomalous channel.**

Since the arch of the aorta and its branches seemed to give a bit confusing anatomy, the patient was advised CT angiography. The CT angiogram gave almost the same findings of supracardiac TAPVR with obstruction at two levels and the associated atrial septal defect (ASD) secundum. The anatomy of the aortic arch and its major branches was delineated. As per the CT angiogram, the patient had right sided aortic arch. Of special mention is the aberrant right subclavian artery from the aortic arch as its third branch with no obstruction or aneurysm formation, having retrotracheal and esophageal

course. The relevant images of the CT angiogram are shown in Figure-3.



**Figure-2. Transthoracic echocardiography showing obstruction at the junction of vertical vein and pulmonary venous confluence.**



**Figure-3. CT Angiogram showing right sided aortic arch.**

## DISCUSSION

Variety of imaging modalities are present to assist diagnosis of congenital anomalies of aortic arch. Conventional tools like barium esophagram has its own limitations in terms of its execution specifically among children.<sup>1</sup> Catheter angiography is another 2-dimensional tool is not usually preferred as other non-invasive options as for imaging exist. Echocardiography is generally the 1<sup>st</sup> imaging tool among children but it has its own operator dependent aspects especially among complex arch anomalies.<sup>11</sup> For the early and accurate description of pre-surgery anatomy, CT and MRI are so much valuable.<sup>4,5</sup> In the present case, 2-D echocardiogram showed supracardiac type of TAPVR. The CT angiogram gave almost the same findings of supracardiac TAPVR with obstruction at two levels and the associated ASD secundum. As per the CT angiogram, the patient had right sided aortic arch while the aberrant right subclavian artery from the

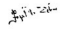
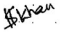



aortic arch as its third branch with no obstruction or aneurysm formation, having retrotracheal and esophageal course. As in the present case, CT delivers high spatial resolution assessment of vascular abnormalities. With emergence of newer generation scanners having modern radiation dose reduction technologies, the radiation dose has reduced significantly.<sup>5</sup>

Copyright© 08 Apr, 2021.

## REFERENCES

- Priya S, Thomas R, Nagpal P, Sharma A, Steigner M. **Congenital anomalies of the aortic arch.** Cardiovasc Diagn Ther. 2018; 8(Suppl 1):S26-S44.
- Jakanani GC, Adair W. **Frequency of variations in aortic arch anatomy depicted on multidetector CT.** Clin Radiol 2010; 65:481-7.
- Hanneman K, Newman B, Chan F. **Congenital variants and anomalies of the aortic arch.** Radio Graphics 2017; 37:32-51.
- Krishnamurthy R, Bahouth SM, Muthupillai R. **4D Contrast-enhanced MR Angiography with the keyhole technique in children: Technique and clinical applications.** Radiographics 2016; 36:523-37.
- Kellenberger CJ. **Aortic arch malformations.** Pediatr Radiol 2010; 40:876-84.
- Bjornard K, Riehle-Colarusso T, Gilboa SM, Correa A. **Patterns in the prevalence of congenital heart defects, metropolitan Atlanta, 1978 to 2005.** Birth Defects Res A Clin Mol Teratol. 2013; 97(2):87-94.
- Reller MD, Strickland MJ, Riehle-Colarusso T, Mahle WT, Correa A. **Prevalence of congenital heart defects in metropolitan Atlanta, 1998-2005.** J Pediatr 2008; 153:807.
- Hoffman JI, Kaplan S. **The incidence of congenital heart disease.** J Am Coll Cardiol 2002; 39:1890.
- Olsen R, Doyle Z, Levy D, Anton T, Molkara D, Tarsa M, et al. **Anomalous pulmonary venous return: Insights into prenatal detection.** J Ultrasound Med. 2016; 35(6):1193-206.
- Rayoo R, De Silva D, Jones E, Ponnuthurai FA, Srivastava PM, Calafiore P. **Comprehensive echocardiographic diagnosis of right heart enlargement in association with partial anomalous pulmonary venous drainage in three adult women.** Intern Med J. 2012; 42(Suppl 5):30-4.
- McLaren CA, Elliott MJ, Roebuck DJ. **Vascular compression of the airway in children.** Paediatr Respir Rev. 2008; 9:85-94.

## AUTHORSHIP AND CONTRIBUTION DECLARATION

Sr. #	Author(s) Full Name	Contribution to the paper	Author(s) Signature
1	Fazal ur Rehman	Data collection, Final approval.	
2	Sabiha Khan	Introduction, Proof reading.	
3	Waqas Ali	Literature review.	
4	Asif Ali Khuhro	Drafting, Discussion.	
5	Basharat Hussain	Literature review, Data collection.	
6	Shakeel Ahmed	Data collection, References	